



## Hard Chess Puzzle # 0110

By

G Bud Games  
<https://gbud.in>

January 19, 2022

## Contents

<b>Hard Chess puzzle # 0110 - Mate in 3 moves</b>	<b>3</b>
Hard chess puzzle 0110 . . . . .	3
Solution to hard chess puzzle 0110 . . . . .	4
Solution 1 . . . . .	4
Right moves for the solution to the hard chess puzzle 0110	7
Explanation for the moves . . . . .	7
Categories of hard chess puzzle 0110 . . . . .	8
hard chess puzzle 0110 chart . . . . .	9
How to view the solution to hard chess puzzle 0110 . . . . .	11
How to get help for moves in the hard chess puzzle 0110 . . . . .	12
Play chess for free . . . . .	13

## List of Figures

1	<a href="https://gbud.in/g40qbz3">Solve this hard chess puzzle 0110. Mate in 3 moves @ https://gbud.in/g40qbz3</a> . . . . .	3
2	<a href="https://gbud.in/g40qbz3">Solve this hard chess puzzle online with solution @ https://gbud.in/g40qbz3</a> . . . . .	3
3	Initial board position of hard chess puzzle 0110 . . . . .	4
4	bxc4 . . . . .	5
5	Qxd4 . . . . .	5
6	Rb8+ . . . . .	6
7	Rxb8 . . . . .	6
8	Rxb8# . . . . .	7
9	hard chess puzzle 110 chart 1 . . . . .	9
10	hard chess puzzle 110 chart 2 . . . . .	10
11	hard chess puzzle 110 chart 3 . . . . .	10
12	hard chess puzzle 110 chart 4 . . . . .	11
13	Click the solution button to view solutions @ <a href="https://gbud.in/g40qbz3">https://gbud.in/g40qbz3</a> . . . . .	11
14	Click the help button to get help on next move @ <a href="https://gbud.in/g40qbz3">https://gbud.in/g40qbz3</a> . . . . .	12
15	Solve more hard puzzles @ <a href="https://gbud.in/chshdpz">https://gbud.in/chshdpz</a> . . . . .	12
16	Solve other puzzles @ <a href="https://gbud.in/chsgppz">https://gbud.in/chsgppz</a> . . . . .	12
17	Play chess online for free. Solve puzzles and play with friends	13
18	Solve this puzzle online by scanning this QR code or go to the link below . . . . .	14

## Hard Chess puzzle # 0110 - Mate in 3 moves

Solve this hard chess puzzle and improve your chess games through improvement of your chess strategies and chess tactics. This hard puzzle is a subset of [kids games](#).

Puzzle No : 0110

Difficulty level : hard

Description : Mate in 3 moves

Next Move : White

Player level : Advanced

Short URL for puzzle : <https://gbud.in/g40qbz3>

### Hard chess puzzle 0110

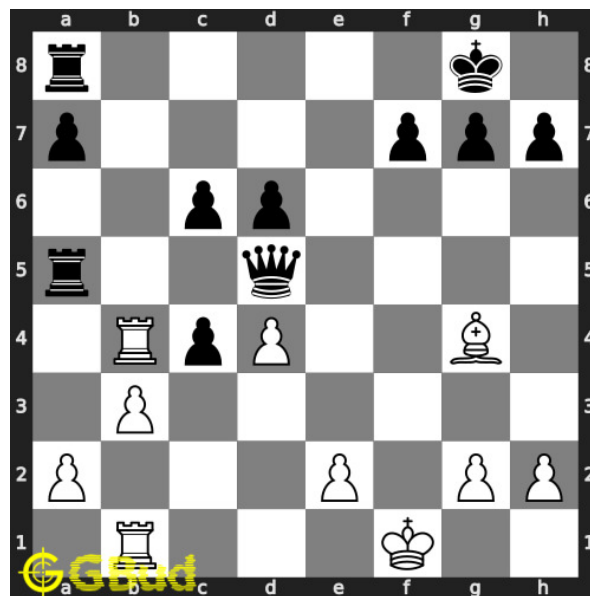


Figure 1: Solve this hard chess puzzle 0110. Mate in 3 moves @ <https://gbud.in/g40qbz3>



Figure 2: Solve this hard chess puzzle online with solution @ <https://gbud.in/g40qbz3>

Dont forget to check out [chess puzzles](#), [easy chess puzzles](#), [medium chess puzzles](#), [hard chess puzzles](#) and [chess puzzles collections](#) .

## Solution to hard chess puzzle 0110

At this puzzle, next [move](#) is by [White](#). The objective of the puzzle is to mate in 3 moves.

See the interactive solution at the [puzzle page](#)

### Solution 1

**Initial board position** This is the initial board position of hard chess puzzle 0110.

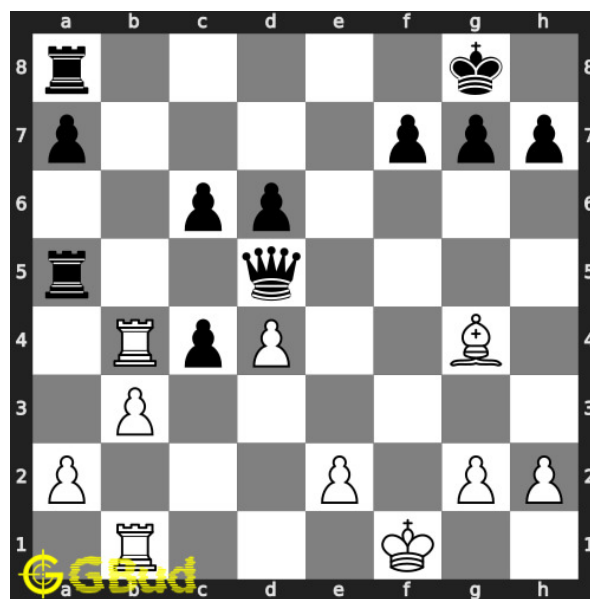


Figure 3: Initial board position of hard chess puzzle 0110

**Move 1** Move by white

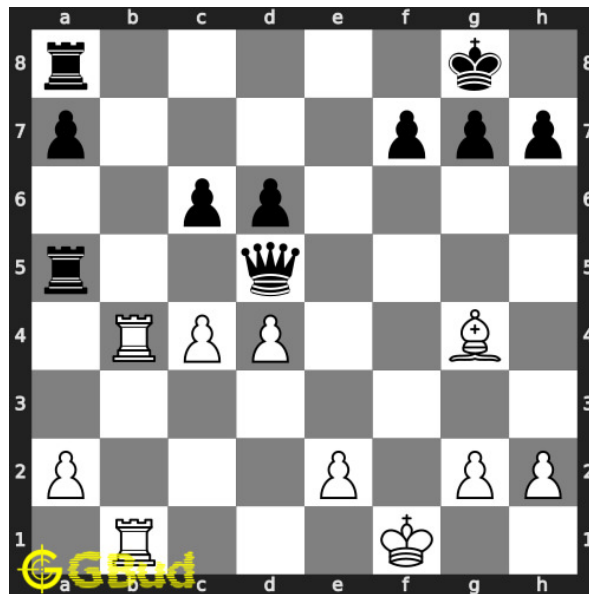


Figure 4: bxc4

your **pawn** threatens the opponent's **queen** after the **capture**. it also opens the **b file** for the **rooks** to form a **battery**. this is a decoy **move**

**Move 2** Move by black

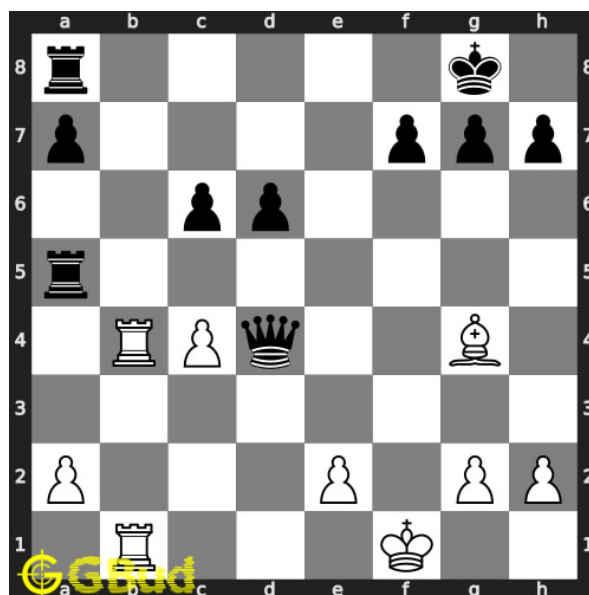


Figure 5: Qxd4

opponent's **queen captures** your hanging **pawn**. opponent fell for the decoy **move**

### Move 3 Move by white

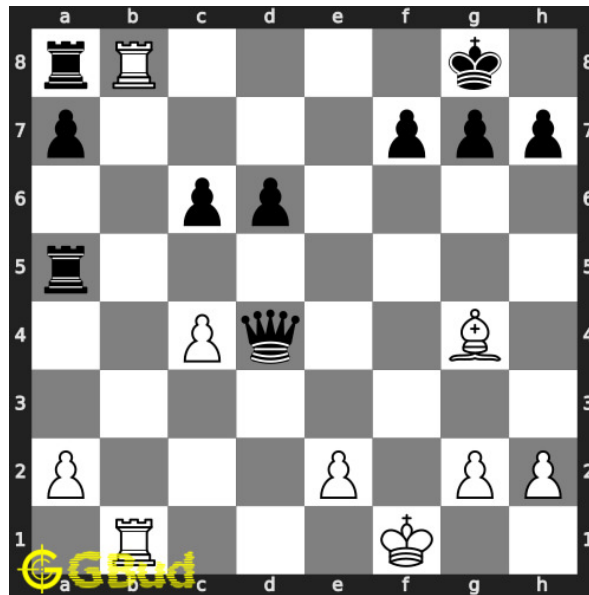


Figure 6: Rb8+

your **rook sacrifices** itself by having a **fork** on opponent's **king** and **rook**. this is to attract the opponent's **rook** which is defending the eighth **rank**.

### Move 4 Move by black

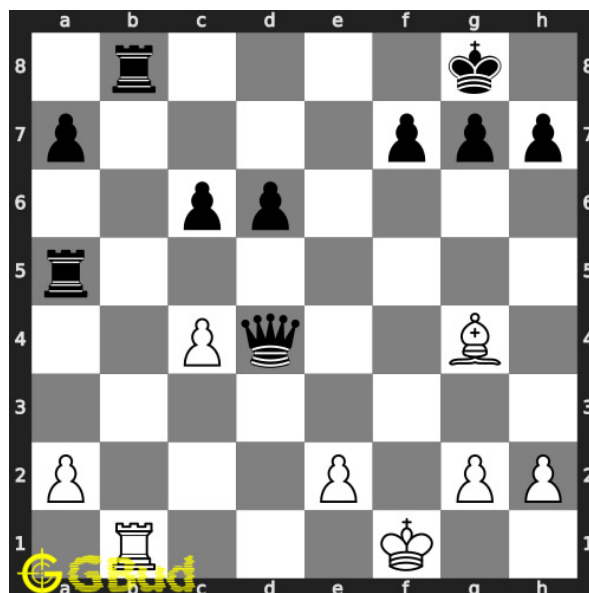


Figure 7: Rxb8

opponent's **rook captures** your **rook** as this is the only legal **move** available. this is a **zugzwang move** as the **rook** is forced to respond

## Move 5 Move by white

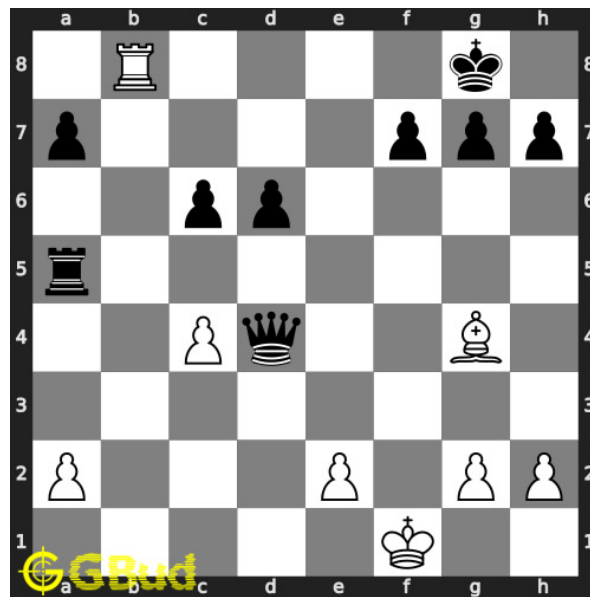


Figure 8: Rxb8#

your **rook captures** opponent's hanging **rook** and **checkmate**. this is called back-rank **mate** since the **king** is blocked by friendly **pawns**.. this is how you can **mate** in 3 **moves**.

## Right moves for the solution to the hard chess puzzle 0110

Based on the objective of the puzzle, you have to make the right moves. Following are the right moves

1. bxc4, Rb8+, Rxb8#

## Explanation for the moves

1. bxc4 - Your pawn threatens the opponent's queen after the capture. It also opens the b file for the rooks to form a battery. This is a decoy move
2. Qxd4 - Opponent's queen captures your hanging pawn. Opponent fell for the decoy move
3. Rb8+ - Your rook sacrifices itself by having a fork on opponent's king and rook. This is to attract the opponent's rook which is defending the eighth rank.
4. Rxb8 - Opponent's rook captures your rook as this is the only legal move available. This is a zugzwang move as the rook is forced to respond

5. Rxb8# - Your rook captures opponent's hanging rook and checkmate. This is called back-rank mate since the king is blocked by friendly pawns.. This is how you can mate in 3 moves.
6. For right move - You have achieved the back-rank mate after the right sacrifice. Good job
7. For wrong move - You might have missed the back-rank mate. Try again

## Categories of hard chess puzzle 0110

This hard chess puzzle falls in these categories.

1. [Hard chess puzzles](#)
2. [Sacrifice puzzles in chess](#)
3. [Mate in 3 puzzles in chess](#)
4. [Endgame puzzles in chess](#)
5. [Fork puzzles in chess](#)
6. [Decoy puzzles in chess](#)
7. [Battery puzzles in chess](#)
8. [Strategy puzzles in chess](#)
9. [Mate pattern puzzles in chess](#)
10. [Zugzwang puzzles in chess](#)
11. [Rook puzzles in chess](#)



## hard chess puzzle 0110 chart



Figure 9: hard chess puzzle 110 chart 1



Figure 10: hard chess puzzle 110 chart 2



Figure 11: hard chess puzzle 110 chart 3

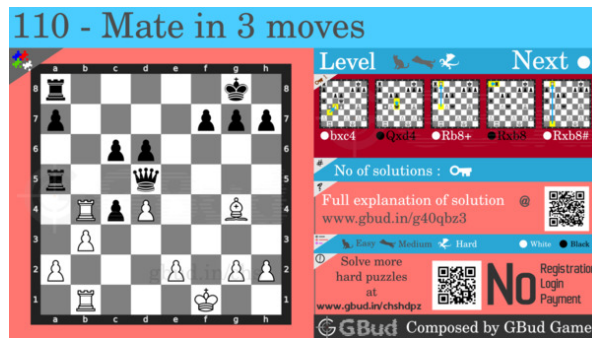


Figure 12: hard chess puzzle 110 chart 4

## How to view the solution to hard chess puzzle 0110

To view the [solution to this puzzle](#), follow the steps given below

1. Go to the [puzzle page](#)
2. Click the solution button (Key as shown [below](#)) to view the solution



Figure 13: Click the solution button to view solutions @ <https://gbud.in/g40qbz3>

## How to get help for moves in the hard chess puzzle 0110

To get help or the possible next moves in the puzzle, , follow the steps given below

1. Go to the [puzzle page](#)
2. Click the help button (exclamation mark as shown [below](#)) to get help or suggestion on next possible [move](#)



Figure 14: Click the help button to get help on next move @ <https://gbud.in/g40qbz3>



Figure 15: Solve more hard puzzles @ <https://gbud.in/chshdpz>



Figure 16: Solve other puzzles @ <https://gbud.in/chsgppz>

## Play chess for free

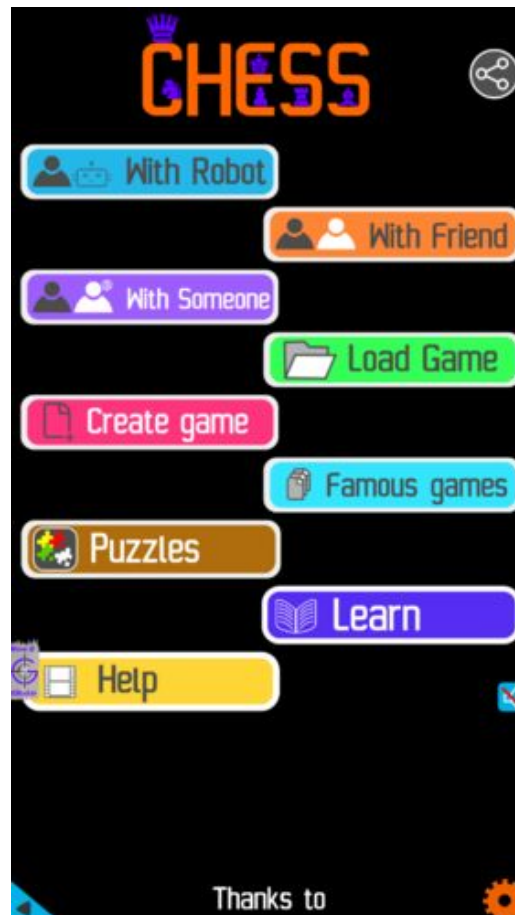


Figure 17: Play chess online for free. Solve puzzles and play with friends

Play chess for free at <https://gbud.in/chs>

We present you a platform to play chess online with friends for free. No need to install any app. You can play chess for free without registration or login.

Simple. You can do several chess related activities.

1. [solve chess puzzles](#)
2. [learn about chess](#)
3. [play chess with computer](#)
4. [play chess with friend](#)
5. [create your own chess games](#)

6. [fen viewer](#)
7. [fen editor](#)
8. [fen generator](#)
9. [pgn viewer](#)
10. [chess board editor](#)
11. [view famous chess games.](#)



Figure 18: Solve this puzzle online by scanning this QR code or go to the link below

<https://gbud.in/g40qbz3>

Read the latest article on Hard Chess puzzle # 0110 - Mate in 3 moves by scanning this QR code or click the link

Previous article : « [Hard Chess puzzle # 0109 - Mate in 2 moves](#)

Next article : [Hard chess puzzles](#) »

[Back to top](#)

[Contact Us](#)